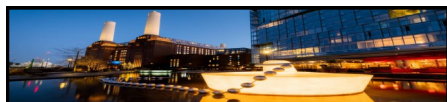




Family Events & Activities - February 2023



Light Festival - Battersea Power Station

Illuminate dark early evenings with The Light Festival, which brings eight neon bright installations to Battersea Powers Station. Installations are switched on from 8am, but best viewed after dusk. It's the perfect way to end an afternoon spent playing at the spectacular new Prospect Park Playground, designed by landscape architects LDA Design.

Date: Until 5 Mar 23

Time: 8.00am-11.00pm

Location: Battersea, London

Website: <https://batterseapowerstation.co.uk/>

Spring Awakening with Play in the Park

Date: 17 Feb 23

Time: 11.00am - 3.00pm

Location: Regents Park

Website: www.royalparks.org.uk/



Family Half Term Event

Join us over February half term for lively games and craft activities that celebrate London's famous Tube network and the ways it connects people to the places they love.

Date: 11-19 Feb 23

Time: 10.00am - 4.00pm

Location: Covent Garden, London

Website: <https://www.ltmuseum.co.uk/>



Islington Bikeability Course

13 Feb - 17 Feb 23

Bikeability for children offer a full programme of free cycling courses for children in the February half term at Rosemary Gardens and Tollington Place. Choose from:

- Beginners (age 5-12) for children who can't yet ride without stabilisers (2 day course)
- Bikeability Level 1 (age 5-9) teaches bike control skills off road (4 day course)

Bikeability Level 2 (age 9-12) on road training for more confident riders)

Cycle skills for families you can book family cycle skills sessions. **Website:** <https://islington.coordinate.cloud/courses/>



Imagine Festival

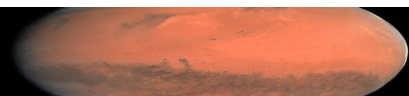
The Imagine Festival showcases the very best children's theatre, comedy, music, literature, poetry, dance and, most importantly, full-on fun for families this February half-term. 11 days jam-packed with more than 100 events, 50% of which are completely free.

Date: 08-18 Feb 23

Time: 10.00am-4.00pm

Location: Southbank, London

Website: www.southbankcentre.co.uk



Mars Out of This World - Royal Obsevatory

The Red Planet awaits as we explore where only robots have gone before!

Date: 14-15 Feb 23

Time: 10.30am - 12.00pm

Location: Greenwich, London

Website: <https://www.rmg.co.uk/>



Delve into the Jurassic at the Natural History Museum

The 45-minute show, which complies to the strictest ethical standards, features snakes, tarantulas, lizards and plenty more creepy-crawlies.

Date: 13-17 Feb 23

Time: 11.00am, 12.15pm & 1.30pm

Location: Kensington, London

Website: <https://www.nhm.ac.uk/>



The Big Hideout - London Wetlands

As well as The Big Hideout there's lots of other wild and wonderful activities for the whole family to discover! We will be making nests, building a bird hide, getting caked in mud in the mud kitchen. There will also be a trail to explore to identify the many species of birds we have.

Date: 11-19 Feb 23

Time: 9.30am - 5.00pm

Location: Barnes, London

Website: www.wwt.org.uk



Access to Sport

Multi Sports Finsbury Park Athletics Track

Thursday ages 8-9 & 10-12, 10.00am-3.30pm Sports Academy

Finsbury Park Tennis Courts

Monday-Thursday ages 6-7, 9.00am-10.00am ; ages 8-10 10.00am-11.00am; ages 11-16 11.00am-12.00pm

Date: Mon 13 Feb - Thurs 17 Feb 23

Time: 10.00am - 3.00pm

Ages: 8-12

Islington Football & Multi-Sports Finsbury Leisure Centre

Monday-Thursday ages: 8-16, 10:30am-12:30pm & 1.00-3.00pm

Football & Multi Sports

Monday-Thursday ages 8-11, 10.00am-12.00pm

Monday-Thursday ages 5-11, 10.00am - 12.00pm

Location: Rosebowl visit

www.rosebowlislington.org.uk Tuesday-Friday, ages 8-13, 10.30am -12:30pm & 1.00pm-3.00pm

Website: <https://accesstosports.org.uk/>

National Army Museum

Travel back to the 1940s and create your own ration book in this fun, creative workshop. Come and learn all about how soldiers and civilians lived through the Second World War.

Session times:

- 10.30am to 12.15pm
- 1.30pm to 3.30pm

Date: 14-17 Feb 23

Website: <https://www.nam.ac.uk/>

Islington Holiday Playcentres

Website: www.islington.gov.uk/holidaychildcare



Arts Depot

Comedy Club 4 Kids

Like the name says it's a Comedy Club 4 Kids! Cracking entertainment for everyone over six years old.

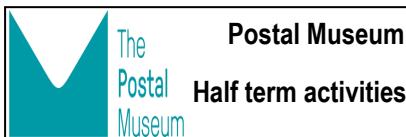
Date: Sat 12 Feb 23

Time: 12.00pm and 2:30pm

Location: North Finchley, London

Website: <https://www.artsdepot.co.uk/>

Free activities: <https://www.artsdepot.co.uk/whats-on/free>



Postal Museum

Half term activities

Designing Cypher Stones - Design your own cypher and paint it on stones. Mark this moment in time by adding symbols and icons that are relevant to your identity, family, and story.

10.30am-4.00pm, 11-12 Feb 23

Family Printmaking Workshop: Sign of the Times - join us at this printmaking workshop to design your own stamp, sign or image, showing how you are experiencing 2023 so far.

11:00am-1.00pm and 2.30pm-4.30pm, 14-15 Feb 23

To My Future Self: Time Capsule Letter Writing

10:30am-4.00pm, 16-17 Feb 23

Location: Phoenix Place, London

Website: www.postalmuseum.org

Islington Adventure Playgrounds

Website: <https://islingtonplay.org.uk>



The Foundling Museum

Workshops run from 11am-1pm and 2pm-4pm and are open to families with children aged 5-12

Tuesday 14 February - Tremendous Traces

Imagine you could transform your most treasured possessions into giant works of art

Wednesday 15 February - Future Makers

How would you build a future that makes everyone feel welcome?

Thursday 16 February - Animated Portraits

Create a unique self-portrait in this hands-on sculpture and animation workshop.

Friday 17 February - Fashioning Myself

How would you design a unique outfit that represents you?

Location: Brunswick Square, London

Website:

www.foundlingmuseum.org.uk



The 100 Story Hotel

At The 100 Story Hotel there are all sorts of guests; lions and tigers, dinosaurs and bears. Some sausage dogs are having a party on the hotel beach. And that's to say nothing of the dedicated staff. The porters are penguins, the housekeeping team is headed up by a handy octopus – and you've already met the polar bear concierge.

Date: Until the 17 Feb 23

Location: Stratford, London

Website: <https://discover.org.uk/>



Vets in Action

This February half-term, kids will be able to truly step into the role of a vet at ZSL London Zoo, during a week of interactive family events celebrating the incredible work of the Zoo's vet team.

Date: 11 Feb - 19 Feb 23

Time: 11.00am - 1.00pm & 2.00-4.30pm



ZSL's Animal Careers Conference 2023

Time: 10.00am - 5.30pm

Date: 15 Feb 23

Location: Online

Website: <https://www.eventbrite.co.uk/e/zsls-animal-careers-conference-2023-free-online-event-tickets-479315644997>



Twist Museum

Twist is an immersive, interactive museum. The exhibits are illusions that challenge your senses from small scale interactive ones to large scale installations you can step into.

Time: 11.00am - 8.00pm

Location: Oxford Circus, London-

Website: <https://twistmuseum.com/>



Isaac Newton - Tower of London

Meet Isaac Newton, the new Warden of the Royal Mint.

Tudor Kitchens find out what life working in King Henry VIII's court was like in the 16th century.

Tudor Palace once designed to impress and showcase Henry VIII's power and grandeur.

Magic Garden come face to face with mythical beasts, storm the battlements, besiege the towers and explore a secret grotto in this magical children's playground.

Date: 11-19 Feb 23

Time: (see website)

Location: Tower Hill, London

Website: www.hrp.org.uk

Unicorn Theatre Online

Greek Myths Unplugged

(ages 7-12)

Narcissus adapted by E.V. Crowe

King Midas & His Golden

Touch adapted by Vanessa Kisuule

Theseus & the Minotaur adapted by

Alexandra Wood

Attack of the Wolfdogs (ages 7-10)

Experience our brand new, free, self-guided audio adventure which begins outside the Unicorn Theatre and takes in the river and old cobbled streets of Shad Thames

Location: Online

Website: <https://www.unicorntheatre.com/whats-on/online>



Museum of London Docklands

Family papercrafts - mindful, creative paper crafts inspired by origami.

Date: 11-19 Feb 23

Time: Drop in

The Story of Water: sensory storytelling

Join musician Luke Saydon for a unique storytelling experience focused on water, wellbeing and family fun.

Mindful Art Exploration & Guided Protection

Date: 14 & 16 Feb 23

Time: 10.30am, 12.00pm & 1.30pm

Location: Docklands, London

Website: <https://www.museumoflondon.org.uk/>

Tower Bridge - Cat Day

Come and celebrate our new Family Trail and the release of 'The Tower Bridge Cat ABC', the fourth book in the award-winning 'Tower Bridge Cat' book series.

Book readings with author Tee Dobinson on the hour, from 11:00 to 17:00.

Book signings with author Tee Dobinson and illustrator Steve Cox. Meet the characters from the books, brought to life by live actors. Face painting, balloons and lots of fun!

Date: 11 Feb 23

Time: 10.00am - 5.00pm

Location: Tower Bridge, London

Website: <https://www.towerbridge.org.uk/>



Hanging By A Thread

Meet characters such as Constantine the Cyclist, Pina the Ballerina and Fred the Tapdancer as they perform their crazy antics! A show without spoken words: each character tells their story through movement and music, and, by interacting with the actor-puppeteers, they perfectly showcase the magic of the marionette.

Date: 11 Feb - 26 Feb 23 **Website:** www.puppetbarge.com/

UNICORN

Anansi the Spider (ages 3-7)

The infamous Anansi - the original trickster and the master spinner of yarns.

Date: Until 25 Feb 23

The Trial (ages 9-13)

Inspired by Kafka's The Trial, this is a story of defiance, the power of friendship and finding hope, even in a world where no one has explained the rules.

Date: Until 19 Feb 23

Time: see website

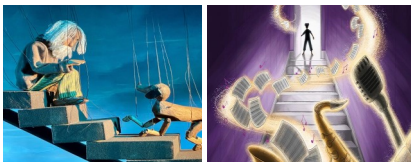
Location: Tooley Street, London

Website: www.unicorntheatre.com

LITTLE ANGEL THEATRE

Little Angel Theatre - February 2023

- ◆ **A Water Journey** (3-5 Feb 23)
- ◆ **The Instrumental** (10 Feb-16 Apr 23)
- ◆ **The Flying Bath** (10 Feb-23 Apr 23)



Free Online Theatre shows: <https://www.littleangeltheatre.com/watch-online/>

Website: www.littleangeltheatre.com/



The Snow Beast

Test tubes bubble, experiments explode and new inventions whirr for the Science Academy's Final Exams. But Faina's got a problem... her project has unexpectedly burst into flames!

Date: 13-14 Feb 23

Location: North Finchley

Website: www.artsdepot.co.uk



The Princess and the Frog

Let's All Dance Ballet Company is delighted to return with this beautiful, classical ballet to charm audiences young and old. An original score, gorgeous costumes and crystal clear story-telling draw you into the magical world of ballet and make it accessible to all.

Date: 19 Feb 23

Location: North Finchley

Website: www.artsdepot.co.uk



Half Term at the Shed

Tales from the Shed are vibrant, inclusive theatre shows that are perfect for young children. They are informal, lively and amazingly engaging as the performers and audience share the same space.

Time: 10.30am & 11.30am

Date: 15-16 Feb 23

Location: Southgate, London

Website: www.chickenshed.org.uk/

Museum Websites

British Museum

www.britishmuseum.org

Horniman Museum

www.horniman.ac.uk

Imperial War Museum

www.iwm.org.uk

Islington Museum

www.islington.gov.uk/islington/history-heritage

London Transport

Museum www.ltmuseum.co.uk

National Gallery-

www.nationalgallery.org.uk

National Maritime

Museum

www.rmg.co.uk

RAF Museum London

www.rafmuseum.org.uk/
London

Science Museum

www.sciencemuseum.org.uk/

The Natural History Museum

www.nhm.ac.uk/

Family Festival: Ocean Adventures - National History Museum

V & A Museum of

Childhoodwww.vam.ac.uk/moc



The Last Match - come along to see this fun, bold and playful collection of 26 giant handmade matchboxes. Each one is uniquely illustrated with a colourful character performing a circus act. Based on a collection of real people with specific animal qualities and characteristics resembling that of their inner animal. As part of the exhibition, you can join the artist Chery on Mon 13 and Wed 15 Feb for a drop in workshop to design and make your very own matchbox and unleash your inner animal!

Date: 12-18 Feb 23 **Time:** 10.00am-4.00pm

Website: <https://www.artsdepot.co.uk/>



Festival of Hieroglyphs: unlocking ancient Egypt

Visit the British Museum this February half-term to explore ancient Egypt as part of our major new exhibition Hieroglyphs: unlocking ancient Egypt.

Join us for a range of activities such as crafts and storytelling celebrating the decipherment of this beautiful script.

Date: 16-17 Feb 23

Time: 10.00am - 4.30pm (8.00pm - 17 Feb)

Location:

Great Russell Street, London

Website: <https://www.britishmuseum.org/>

MUSEUM OF THE HOME

Viet Family Clay & Play Day

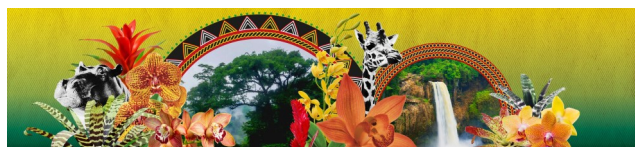
Join us for a day of learning about the material importance of clay in Vietnamese homes, playing with clay, object handling and storytelling!

Date: 14 Feb 23

Time: 10.00am-5.00pm

Location: Hackney, London

Website: www.museumofthehome.org.uk



Orchids at Kew Garden

Kew Gardens' much-loved annual orchid festival is back, bigger and better than ever. Inspired by the beauty and biodiversity of Cameroon, Orchids 2023 is a vibrant celebration of colour and warmth to brighten up the winter months.

Date: 4 Feb - 5 Mar 23

Time: 10.00am-5.00pm

Location: Richmond, London

Website: www.kew.org



Brick Dinos

In this family-friendly exhibition, some of the largest beasts to ever walk the earth have been recreated in miniature form by artist Warren Elsmore and his team.

Incredible models include the raptor-like Masiakasaurus, a life-sized flying pterosaur, the swamp-dwelling, crocodile-like Sarcosuchus, and a new Polacanthus model on display for the first time.

Date: 10 Feb - 29 Oct 23

Time: 10:00am - 5.00pm

Montgomery Bonbon: Museum Mystery Trail

The exciting new trail celebrates the release of the brilliantly funny new children's book 'Montgomery Bonbon: Murder at the Museum' written by comedian Alasdair Beckett-King, with illustrations by Claire Powell.

Date: 11 Feb - 19 Feb 23

Time: 10:00am - 5.00pm

Elmer & Friends

Step into David McKee's colourful world in this first ever major retrospective of his striking illustrations and celebrate over 30 years of Elmer the Patchwork Elephant.

Date: Until 16 Apr 23

Time: 10:00am - 5.30pm

Location: Forest Hill, London

Website: www.horniman.ac.uk/

FREIGHTLINERS



CITY FARM

Freightliners City Farm is a 2.5 acres green space in the very urban London Borough of Islington. It is a small community farm where a diverse range of people take part in farming and gardening and people can visit and spend time in a countryside type environment in the city.

Time: 10.30am - 3.30pm

Location: Islington, London

**HALF TERM MASK MAKING WORKSHOPS & THE LOST SPECIES HANDBOOK & TRAIL
KING'S CROSS COALS YARD DROP (17-19 FEB 23) Website: <https://www.kingscross.co.uk/whats-on>**



**SEN mornings at the Museum
London Transport Museum Early
explorers**

For families with Special Educational Needs (SEN), including Autistic Spectrum Disorder (ASD), we open outside our regular hours on certain special days. Enjoy the Museum at a quieter time, free from the general public, and with many of the gallery sounds turned off.

Explore our All Aboard family spaces in peace, have a go at our holiday activities, get hands-on with genuine parts of transport history, or make use of our sensory bags to support exploring the collection.

Morning: 8.00 onwards (open to the general public from 10:00am.

Tickets: <https://www.ltmuseum.co.uk/visit/families/families-send>

Website: www.ltmuseum.co.uk



Science Museum - Early Birds is a relaxed morning for families with children who need a quieter environment to enjoy the Museum free of the hustle and bustle of the general public.

Taking place on selected Saturdays across the year, we open the Museum early at 08.30, and some of our interactive galleries remain available exclusively to booked Early Birds guests until 11.15. As well as exploring some of the galleries you can enjoy a selection of fun workshops and exciting demonstrations.

All of these events are completely free and suitable for families with children under the age of 15.

Date: Sat 18 Mar 23

Time: 8.00 - 10.00am

Location: South Kensington

Booking: <https://www.sciencemuseum.org.uk/see-and-do/early-birds>

Events Calendar Autism relaxed openings - Museums

<https://www.autisminmuseums.com/events/>



Autism-friendly screenings are sometimes called relaxed or sensory-friendly screenings. Adjustments are made to reduce stress and sensory input, such as low lighting and sound, freedom to move and staff trained in autism .

.Website: <https://dimensions-uk.org/get-involved/campaigns/autism-friendly-cinema-screenings/>



Dawnosaurus is a free event that lets children on the autism spectrum enjoy the Museum with their families and siblings, free from the hustle and bustle of the general public.

Visitors have access to a wide-ranging programme of activities, including a chance to see, meet and even touch live animals. All activities are supported by experienced, autism-aware facilitators. A dedicated Sensory Room will also be available for those children needing a quieter and calmer space.

This event is best for children aged five to 15, and siblings are welcome. You can apply online for a place at Dawnosaurus three to four weeks before each event.

Date: tbc

Time: 8.00 - 10.00am

Location: Cromwell Road, SW7

Website: www.nhm.ac.uk

Tower Bridge - on the third Saturday of every month, we host Relaxed Opening for anyone who would like to explore the Bridge in a calm, tranquil atmosphere, including people with autism and other neurodiverse needs, as well as their siblings, families and carers.

Families are able to explore the Towers, Glass Floors and Engine Rooms and also take part in a family trail if they wish.

Time: 9.30am-11.30am

Website: <https://www.towerbridge.org.uk/events/relaxed-opening>)(book in advance)